

GENERAL NOTES

- © Copyright of this drawing is reserved by JODA Engineering Consultants 2021.
- This drawing shall be read in conjunction with all relevant project drawings and specification.
- Do not scale dimensions from this drawing, use figured dimensions only.

JODA Engineering Consultants accepts no responsibility for errors made as a result of scaling of any dimension from this drawing.

DRAWING - NOTES

- MAINS CABLE DUCTING:**
- THE CONTRACTOR SHALL APPLY FOR A ROAD OPENING LICENCE WHERE APPLICABLE
 - THE CONTRACTOR SHALL REVIEW ALL EXISTING AS-BUILTS TO IDENTIFY EXISTING SERVICES WITHIN AREA OF CONTRACT
 - 1 PUBLIC LIGHTING CIRCUIT TO HAVE NO MORE THAN 6 LIGHTS ON THE ONE CIRCUIT
 - THE CONTRACTOR IS REQUIRED TO SUPPLY AND INSTALL ONLY ESB APPROVED 100mm RED ELECTRIC CABLE DUCT. NO OTHER DUCT IS ACCEPTABLE. ENSURE DUCT JOINTS ARE PROPERLY MADE AND SECURE AND DUCTS ARE INSTALLED AS STRAIGHT AND LEVEL AS PRACTICABLE WITH ONLY GRADUAL CHANGES IN DIRECTION AND LEVEL. WHERE BENDS ARE NECESSARY, USE ESB APPROVED BENDS ONLY
 - PROVIDE EACH DUCT WITH A STRONG CONTINUOUS 10mm POLYPROPYLENE DRAW ROPE FREE OF KNOTS AND SECURELY ANCHORED AT EACH END
 - CLEAN EACH DUCT AND SEAL THE ENDS USING END CAPS OR FOAM AND PLASTIC BAG SO AS TO AVOID INGRESS OF GRIT, STONES etc...
 - ENSURE DUCTS ARE INSTALLED AS PER THE REQUIRED STANDARDS
 - INSTALL DUCTS SO AS TO ENSURE THE REQUIRED MINIMUM CLEARANCE OF 300mm FROM ALL OTHER SERVICES IS MAINTAINED
 - INSTALL ESB CABLE WARNING TAPE 300mm BELOW GROUND LEVEL ALONG THE FULL LENGTH OF THE DUCTS, REFER TO DETAIL 3.
 - GUIDE BOOK FOR ESB NETWORKS STANDARDS FOR ELECTRICAL SERVICES, REV 5, JAN 2014 SHALL BE READ IN CONJUNCTION WITH DRAWING

SAFETY WARNING:
TRIAL HOLES (AT CONTRACTORS EXPENSE) MAY BE REQUESTED TO CONFIRM DUCTING AND TAPE CONFORM TO ESB REQUIREMENTS. FAILURE TO CONFORM WILL RESULT IN RE-EXCAVATION OF ALL TRENCHES TO INSTALL THEM CORRECTLY.

REGULATIONS:
CONTRACTOR TO COMPLY WITH ALL ETICI AND ESB REQUIREMENTS AND CORK COUNTY COUNCIL PUBLIC LIGHTING GUIDELINES.

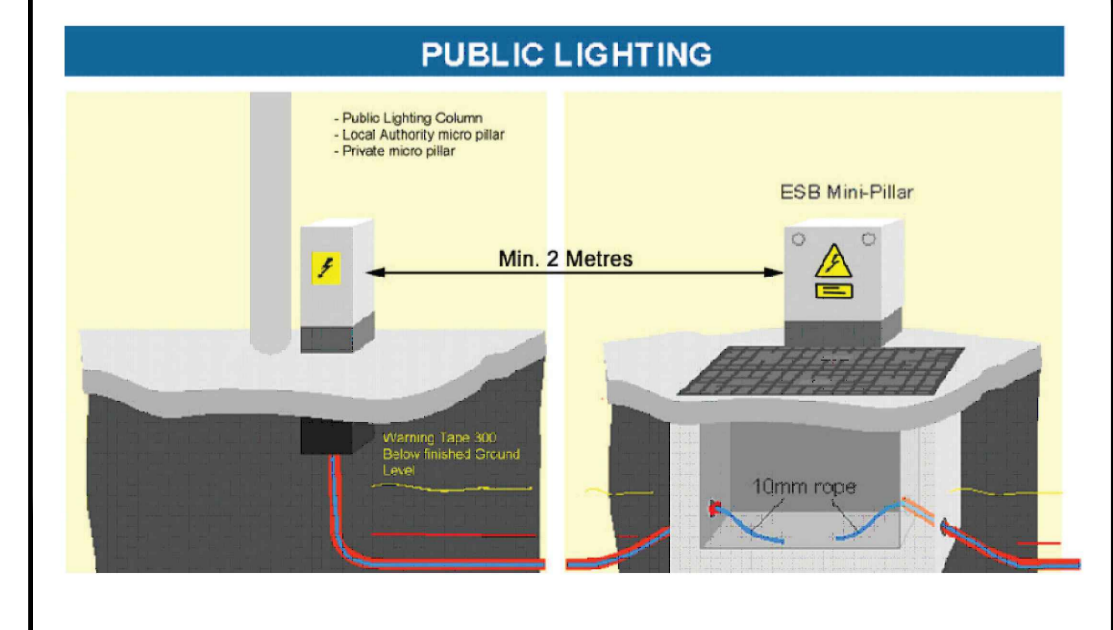
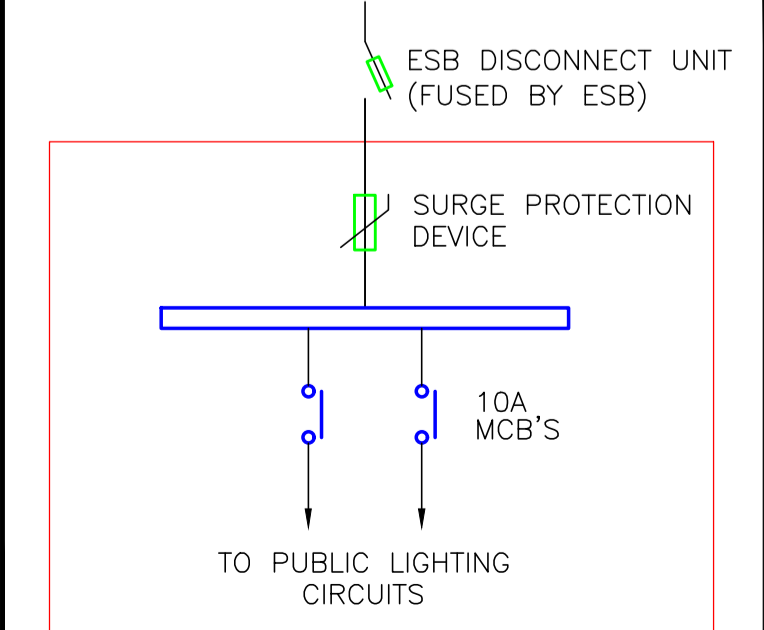
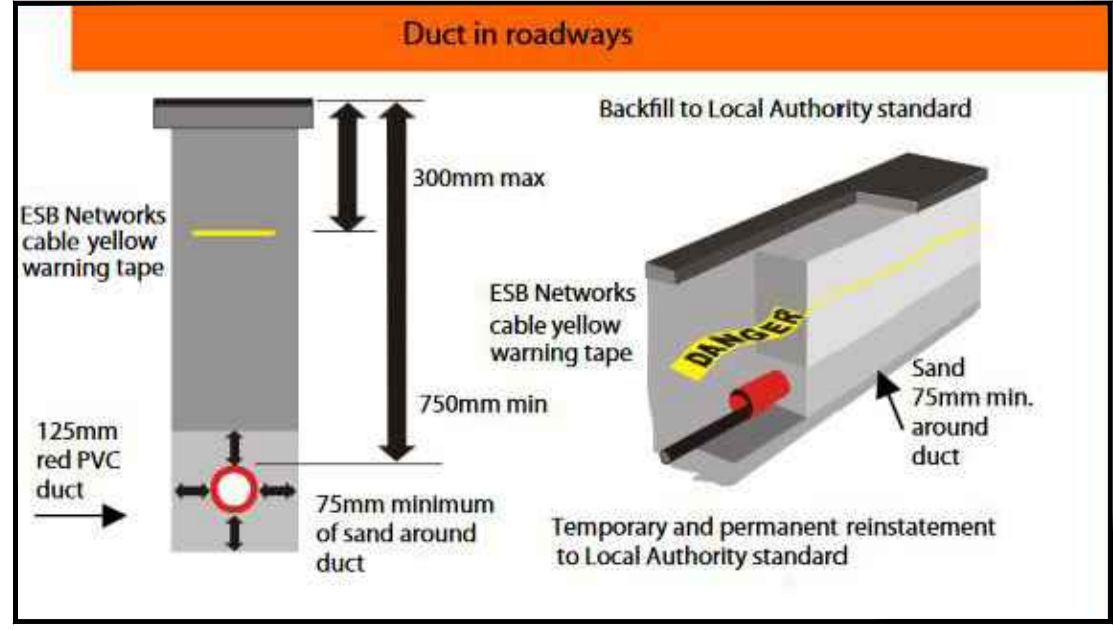
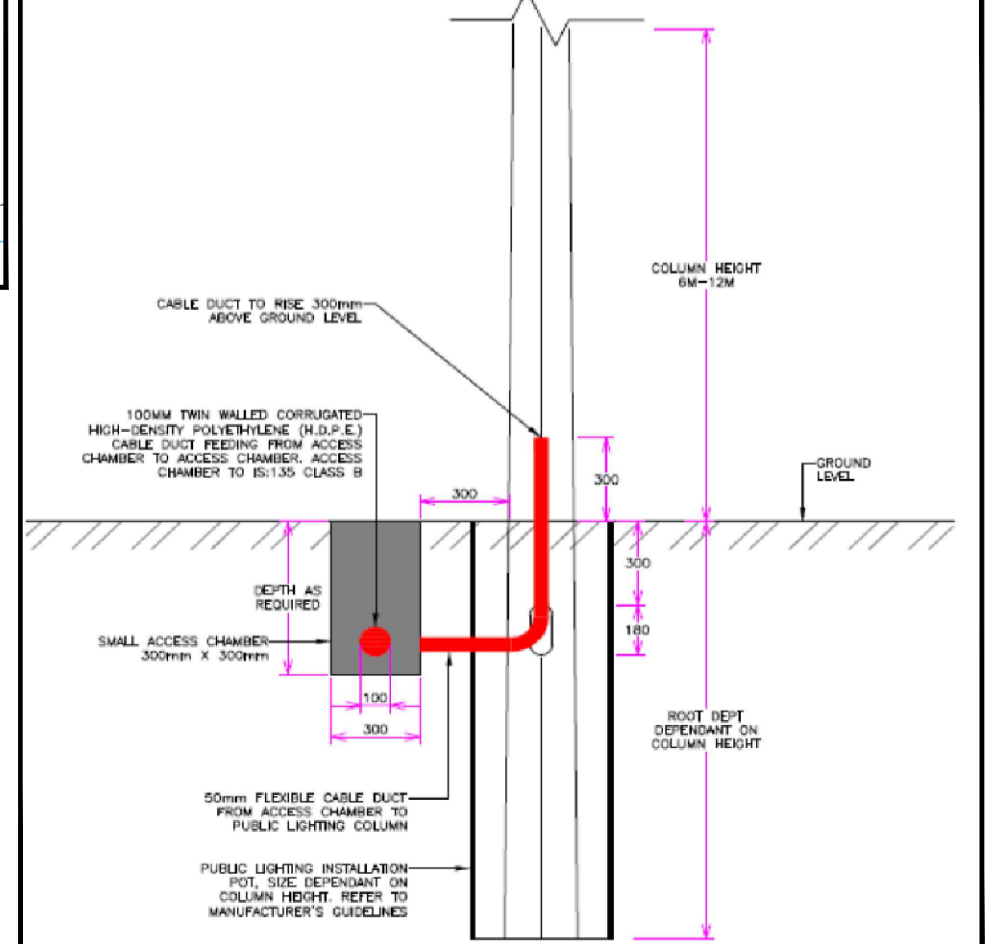
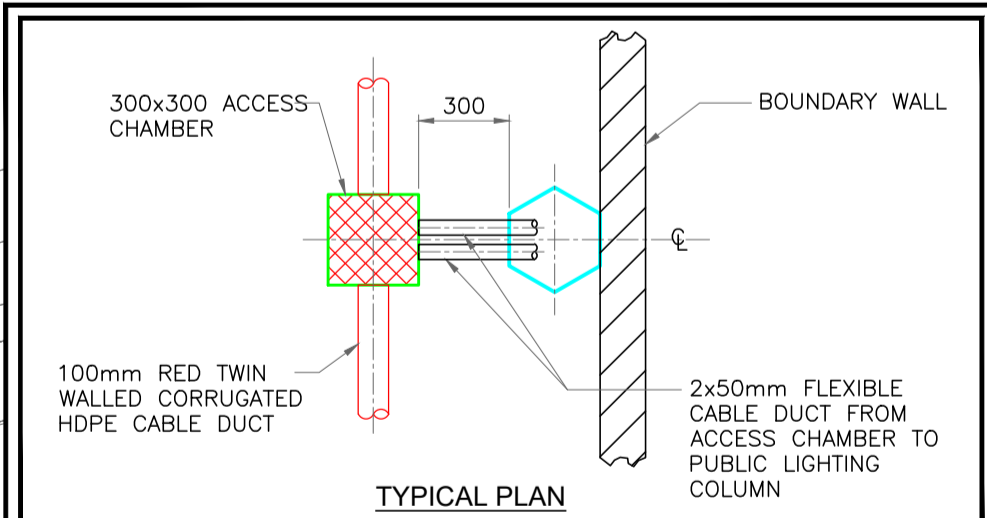
NOTE:
COLUMN LOCATIONS INDICATIVE ONLY.
COLUMN LOCATIONS TO BE CO-ORDINATED ON-SITE BEFORE INSTALLATION IN CONJUNCTION WITH THE CORK COUNTY COUNCIL & JODA.

- LEGEND**
- PUBLIC LIGHTING DUCTING Ø100mm
 - PUBLIC LIGHTING DUCTING Ø125mm
 - ⊠ ELECTRICAL CHAMBER 600x600
 - ⊙ STREET LANTERN SEE TYPE A
 - ⊙ STREET LANTERN SEE TYPE B

Grid 1 - Roadway
Results - Horizontal Illuminance (lux)
Eavg= 7.65
Emin= 1.83
Emax= 16.33
Emin/Eavg= 0.11
Emin/Emax= 0.24
Emax/Eavg= 2.12

Grid 2
Results - Horizontal Illuminance (lux)
Eavg= 16.56
Emin= 7.79
Emax= 21.73
Emin/Eavg= 0.36
Emin/Emax= 0.47
Emax/Eavg= 1.31

Luminaire Data
Luminaire A TRSA-02-150-4L30828W
Lamp 8Du4L28W3K MF 0.76
Luminaire B TRMA-02-12511L30840W
Lamp 24L11L40W30K MF 0.84



DETAIL 1: TYPICAL MICRO/MINI PILLAR DETAIL

DETAIL 2: TYPICAL PUBLIC LIGHTING COLUMN DETAIL (N.T.S.)

DETAIL 3: DUCTING IN ROADWAYS

CUSTOMER SERVICE POLE

A ISSUED FOR PLANNING VM BB 29.04.22

JODA ENGINEERING CONSULTANTS Civil | Structural | Mechanical | Electrical
Ballycurreen House, Ballycurreen, Cork
T12 P4AY | (021) 454244 | www.joda.ie

Client: O'FLYNN GROUP

Project: APARTMENT DEVELOPMENT AT OLD FORT ROAD BALLINCOLLIG, COUNTY CORK

Dwg Title: PUBLIC LIGHTING LAYOUT

Scale Ref: 1:250 Status: SHD PLANNING

Dwg No: 3866-AD-P1